

jaga

Energy SAVERS LOW-H2O

INSTALLATION



TEMPO



BUILDING-IN



LINEA PLUS



STRADA



KNOCKONWOOD



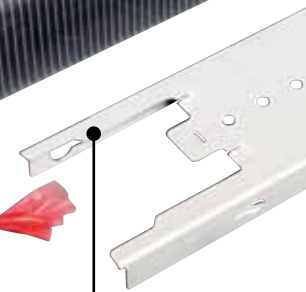
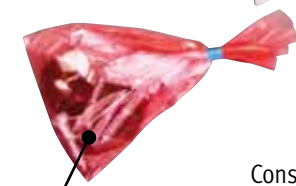
MAXI



Verbindingsplaatjes bloot maken (aantal volgens lengtemaat).
Overige folie pas verwijderen bij montage van de bekleding !
Dénuder les plaquettes de jonction (nombre selon longueur).
Le feuil restant n'enlever qu' avant le montage de l'habillage !
Verbindungsplatten freilegen (Anzahl je nach Länge).
Übrige Folie erst beim Einhängen der Verkleidung entfernen !
Uncover connecting plates (number in accordance with length).
Only remove the remaining film just before mounting the casing !

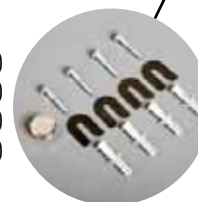


Warmtewisselaar
Échangeur de chaleur
Wärmetauscher
Heat exchanger

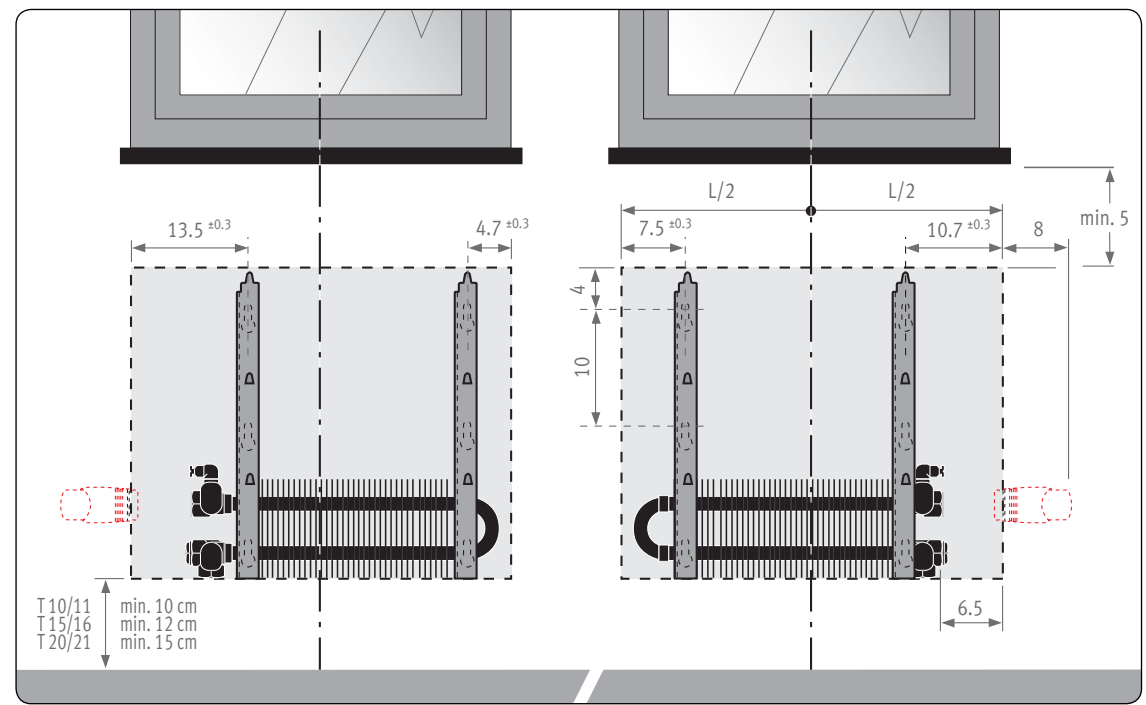
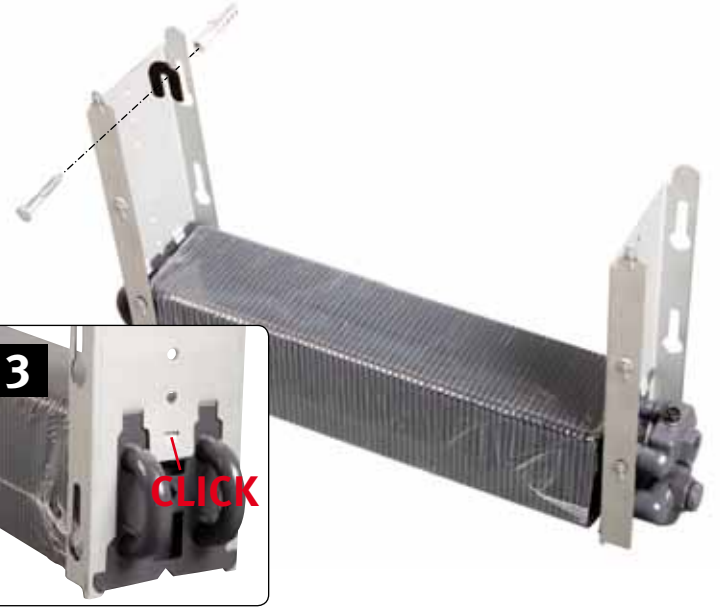
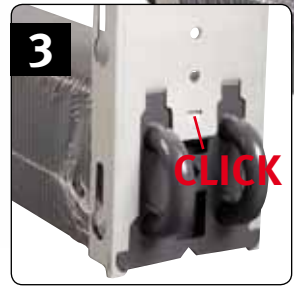


Consoles (volgens model)
Consoles (selon modèle)
Konsolen (je nach Modell)
Brackets (according to model)

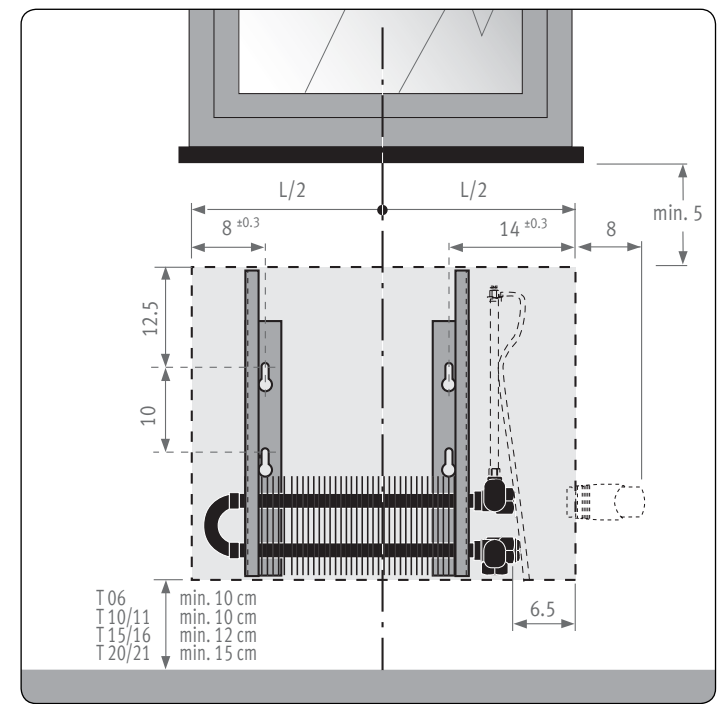
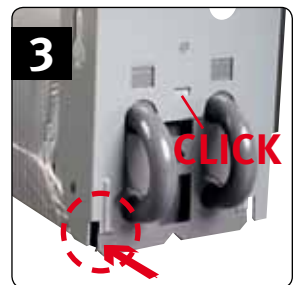
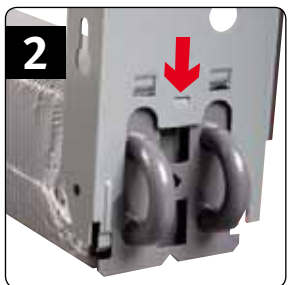
Bevestigingsset (volgens model)
Set de fixation (selon modèle)
Befestigungssatz (je nach Modell)
Fixing set (according to model)



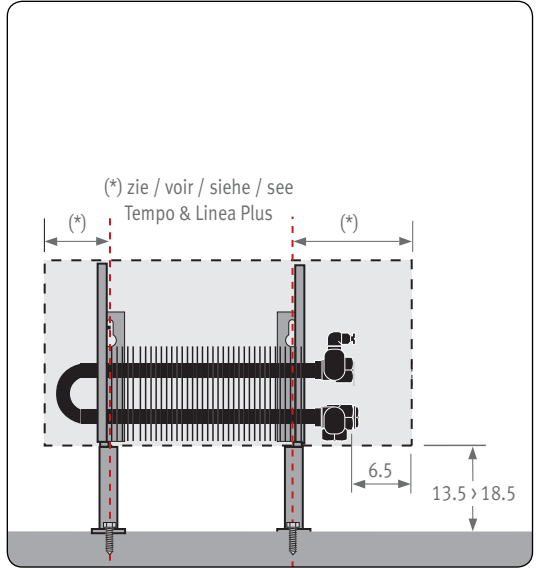
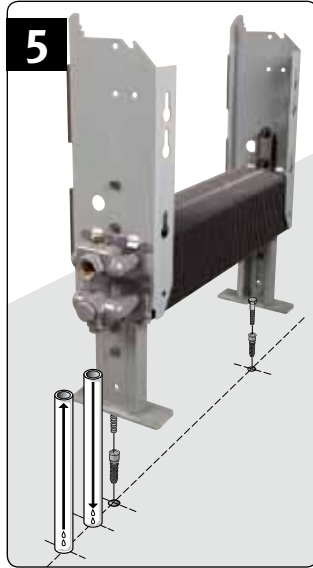
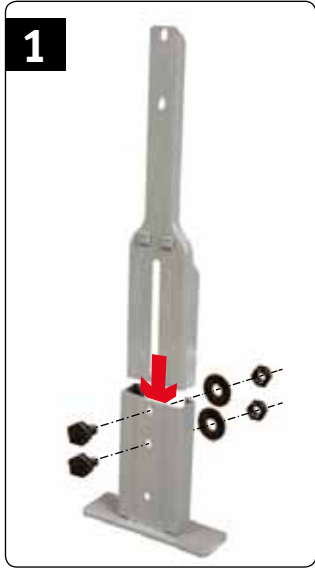
TEMPO & BUILDING-IN

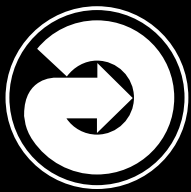


STRADA & LINEA PLUS & SENTINEL



TEMPO & LINEA PLUS vrijstaand _ sur pieds _ Standmodell _ freestanding





jaga

Energy
SAVERS
LOW-H₂O

CONNECTION



JAGA DANFOSS



JAGA



JAGA TYPE 6



JAGA PRO



JAGA COMAP



JAGA TOP



- > Gebruik bij elke hydraulische verbinding teflon of vlas !
- > Toujours utiliser du teflon ou du chanvre à chaque raccordement hydraulique !
- > Bei jedem hydraulischen Anschluss Dichtband oder Hanf verwenden !
- > Always use PTFE tape or flax for all hydraulic connections !



THERMOSTAATKOPPEN VOOR JAGA VENTIELEN TÊTES DE VANNE THERMOSTAT. POUR VANNES JAGA THERMOSTATKÖPFE FÜR JAGA VENTILE THERMOSTATIC HEADS FOR JAGA VALVES



KOMPLETE AANSLUITSETS

Voor alle Low-H₂O radiatoren zijn complete aansluitsets beschikbaar. Inclusief klemkoppelingen en alle toebehoren, en met keuze uit verschillende bedienings- en thermostaatkoppen. Zie: www.theradiatorfactory.com

KITS DE RACCORDEMENT COMPLETS

Des kits de raccordement complets sont disponibles pour l'ensemble des radiateurs Low-H₂O Jaga. Y compris des raccords bicônes et l'ensemble des accessoires, avec un très large éventail de têtes de vanne manuelles et thermostatiques. Voir: www.theradiatorfactory.com

KOMPLETTE ANSCHLUßSÄTZE

Für alle Jaga Low-H₂O Heizkörper sind komplette Anschlußsätze erhältlich. Einschließlich Klemmringverschraubungen, allen Zubehörteilen und einer Auswahl verschiedener Betriebs- und Thermostatköpfe. Besuchen Sie: www.theradiatorfactory.com

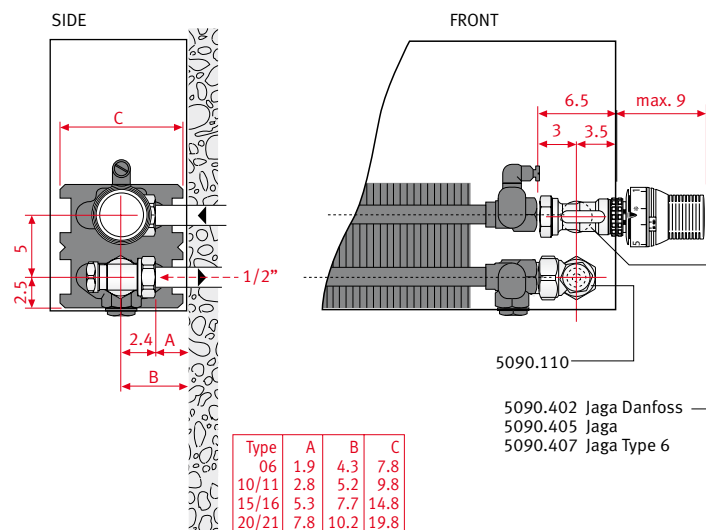
COMPLETE CONNECTION SETS

Complete Low-H₂O connection sets are available for all Jaga radiators. Including sleeve couplings and all accessories, and with a choice of various operating and thermostatic heads. Visit: www.theradiatorfactory.com

NAAR DE WAND _ VERS LE MUR _ ZUR WAND _ TO THE WALL

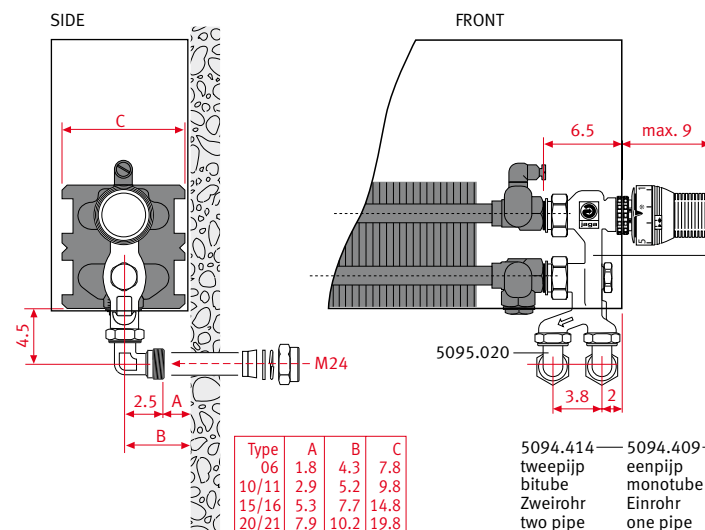
JAGA / JAGA TYPE 6 / JAGA DANFOSS

Tweepijp _ Bitube _ Zweirohr _ Two pipe



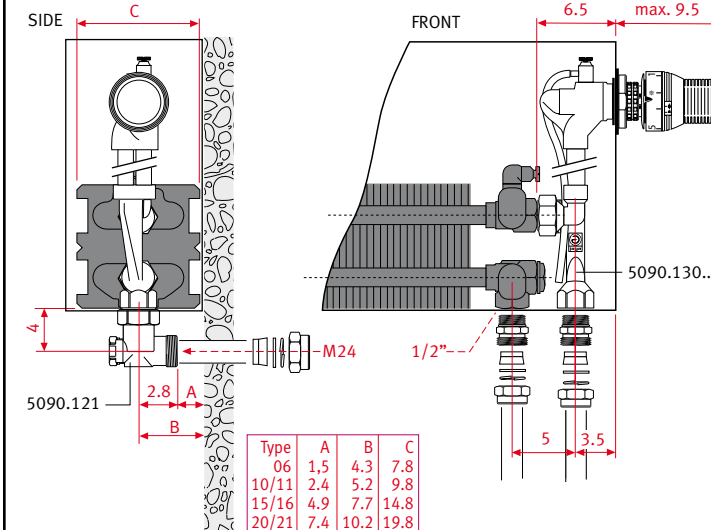
JAGA PRO

Een + tweepijp _ Mono + bitube _ Ein + Zweirohr _ One + two pipe



JAGA TOP

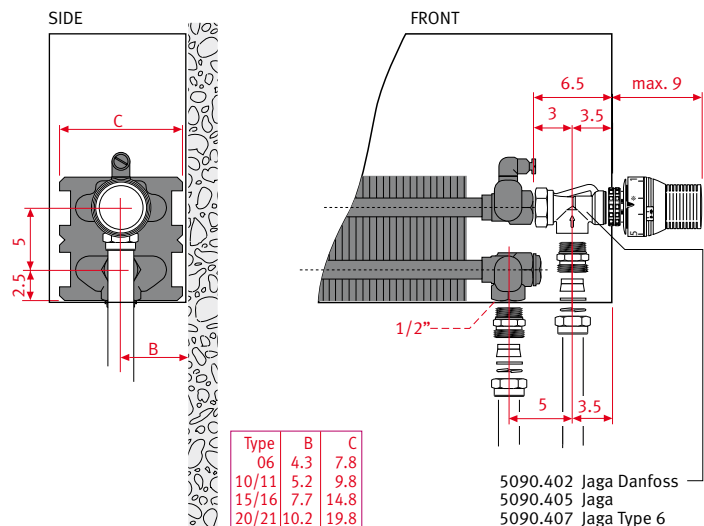
Tweepijp _ Bitube _ Zweirohr _ Two pipe



NAAR DE VLOER _ VERS LE SOL _ ZUM BODEN _ TO THE FLOOR

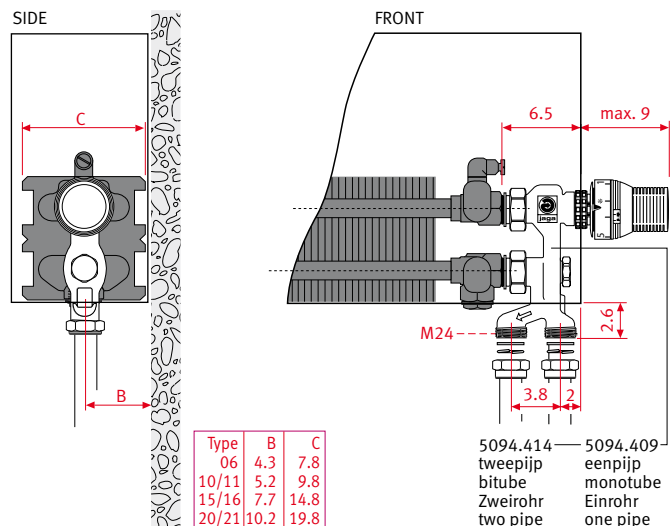
JAGA / JAGA DANFOSS

Tweepijp _ Bitube _ Zweirohr _ Two pipe



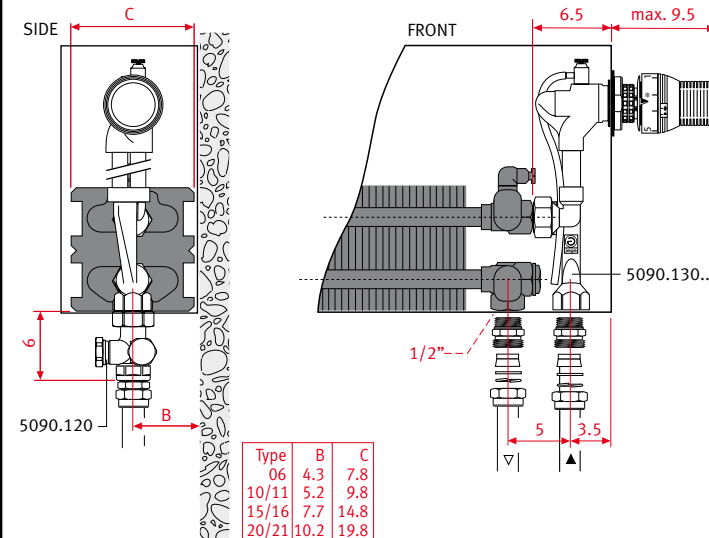
JAGA PRO

Een + tweepijp _ Mono + bitube _ Ein + Zweirohr _ One + two pipe



JAGA TOP

Tweepijp _ Bitube _ Zweirohr _ Two pipe

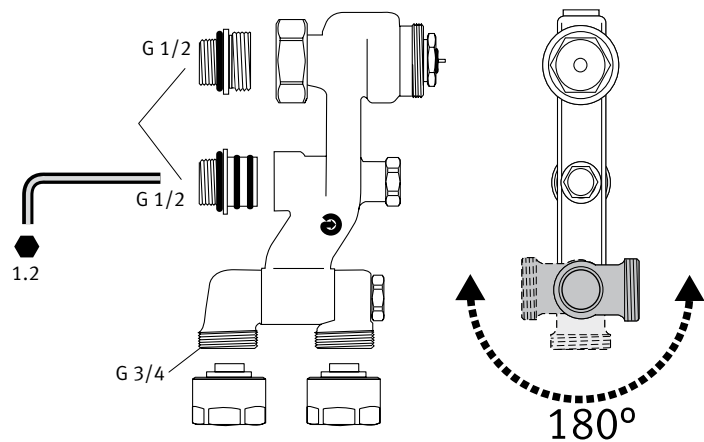


NAAR DE WAND+VLOER _ VERS LE MUR+SOL _ ZUR WAND+BODEN _ TO THE WALL+FLOOR

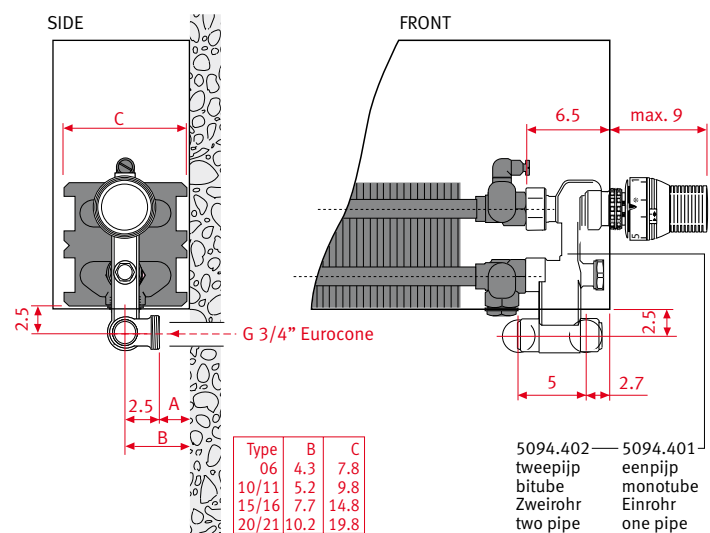
JAGA COMAP

Een + tweepijp _ Mono + bitube

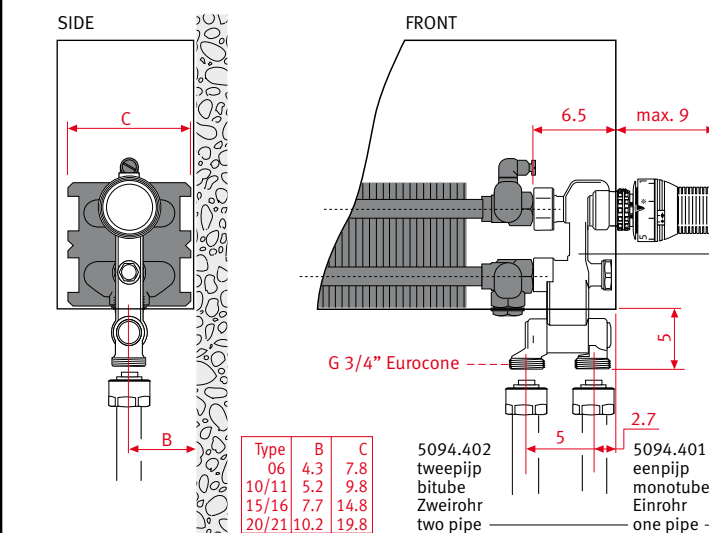
Ein + Zweirohr _ One + two pipe



Naar de wand _ Vers le mur _ Zur Wand _ To the wall



Naar de vloer _ Vers le sol _ Zum Boden _ To the floor

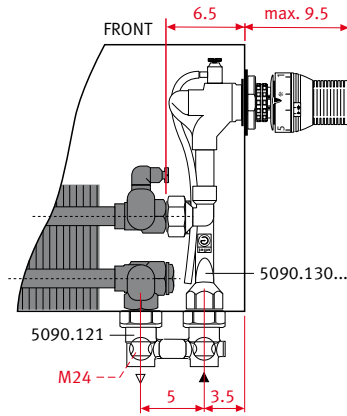
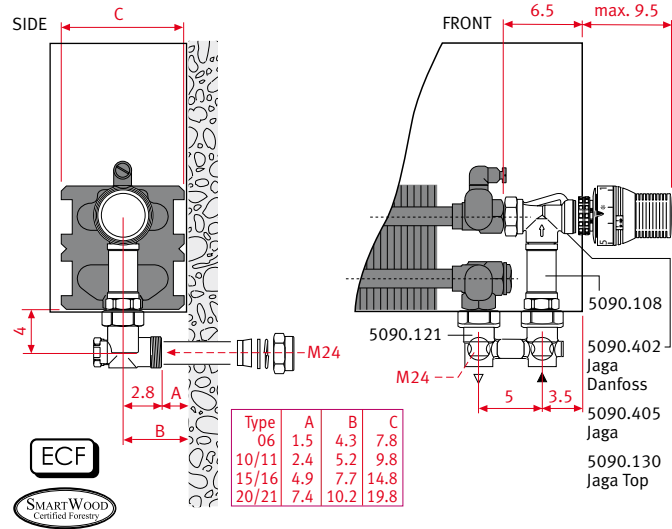


EENPIJP _ MONOTUBE _ EINROHR _ ONE PIPE

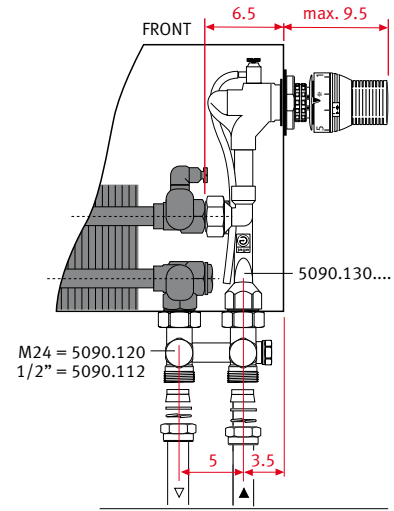
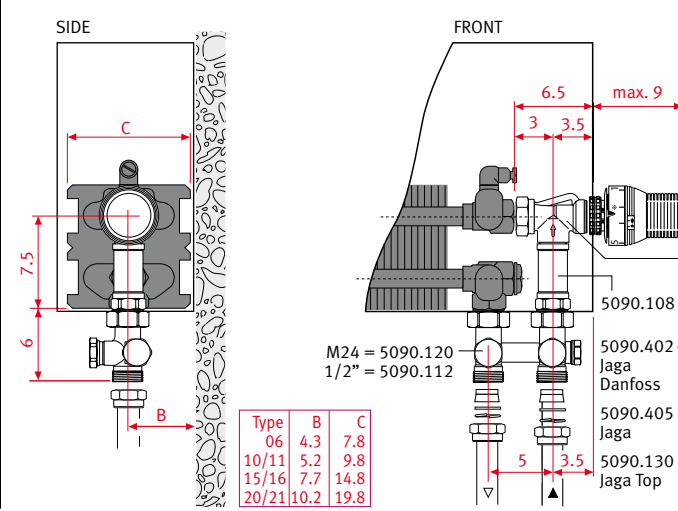
JAGA _ JAGA TOP _ JAGA DANFOSS

- > H-stuk met 2 geïntegreerde afsluiters en afsluitbare by-pass (eenpijp/tweepijp), regelbaar van 25% tot 100%.
- > Raccord en H avec 2 raccords réglables intégrés et by-pass avec fermeture (monotube/bitube), réglable de 25% à 100%.
- > H-Stück mit 2 integrierten Ventilen und abschließbarem Bypass (Einrohr/Zweirohr), regelbar von 25% bis 100%.
- > H-piece with 2 integrated lockshields and lockable by-pass (one pipe/two pipe), adjustable from 25% to 100%.

Naar de wand _ Vers le mur _ Zur Wand _ To the wall



Naar de vloer _ Vers le sol _ Zum Boden _ To the floor



27200.20000004 - 0407 - JAGA N.V.

